

### Introduction:

As a result of conflict with Ethiopia and two decades of civil war, Somalia is littered with landmines, explosive remnants of war (ERW), stockpiles of weapons, and ammunition. According to reports, mine laying may have been occurring as recently as 2012 in the southern and central parts of the country and in the disputed Sool and Sanaag regions. The use of Improvised Explosive Devices (IEDs) by armed groups compounds the threats facing communities and aid organizations.



**Note:** Statistics and figures provided in the monthly report are subject to change. Please contact UNMAS Somalia Information Management for updated statistics, figures and maps.



### Acronyms:

AP	Anti-Personal Mine	MRE	Mine Risk Education
AT	Anti-Tank Mine	IDP	Internally Displaced People
CHA	Confirmed Hazardous Area	NGO	Non-Governmental Organizations
DA	Dangerous Area	UN	United Nations
DHA	Defined Hazardous Area	FEE	Free From Explosives
IED	Improvised Explosive Device	PBIED	Person-Borne IED
MF	Mine Field	VBIED	Vehicle-Borne IED
SAA	Small Arm Ammunition	LA	Local Authority
SHA	Suspected Hazardous Area	SNA	Somalia National Army
UXO	Unexploded Ordnance	MPV	Mine Protected Vehicle
ERW	Explosive Remnants of War	FEL	Front End Loader
CADG	Central Asia Development Group	DDG	Danish Demining Group
SOYDEN	Somalia Youth Development Network	UOS	UkroboronService SC
SOHDO	Somali Humanitarian Demining Organization	TDI	The Development Initiative
VISDO	Voluntary Initiative for Social Development	NPA	Norwegian Peoples Aid
UNMAS	UN Mine Action service	SPF	Somalia Police Force
SFH	Solution for Humanity		

#### **Notes:**

**Hazard:** Refers to a piece of land that is suspected of contaminated with Landmines or Explosives of Remnants of war (ERW) or both.

**Landmines:** Refers to Antipersonnel (AP) and/or Anti Vehicle mines (AT).

**ERW:** Refers to explosives and remnants of war that are still dangerous and can cause casualties and can damage infrastructures.

**Open Hazards:** All those hazard areas that are registered with UNMAS but still no mine action activities conducted to clear them from the threat of Landmines and ERW.

**Closed Hazards:** These are hazard areas that are registered and cleared from the threats of Landmines and ERW by UNMAS.

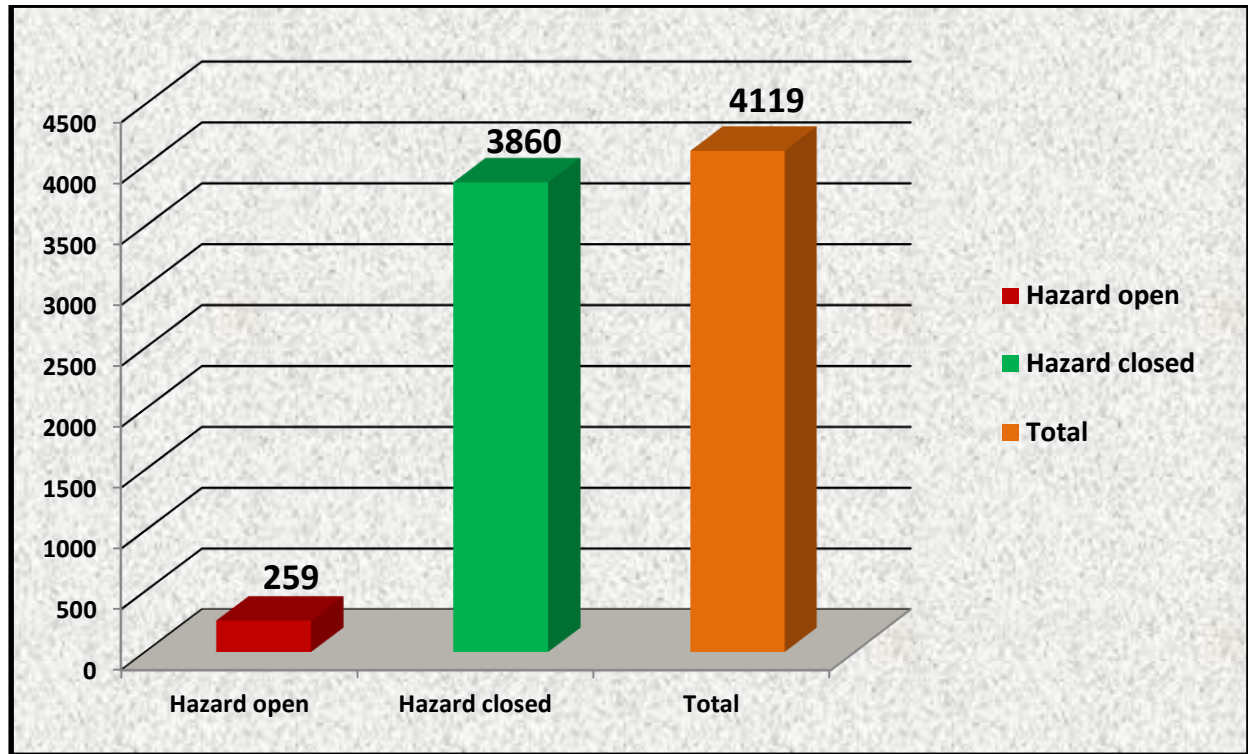
**Suspected Minefields:** These are hazard areas that are suspected with laid landmines by UNMAS.

**MRE:** Mine Risk Education refer to educational sessions conducted to audiences on the threats of Landmines and ERW.

**Landmine & ERW Casualties:** All casualties caused due to direct or indirect contact with landmines and/or ERW.

### 1. HAZARDS:

#### 1.1 Hazards by status since the start of mine action activities:



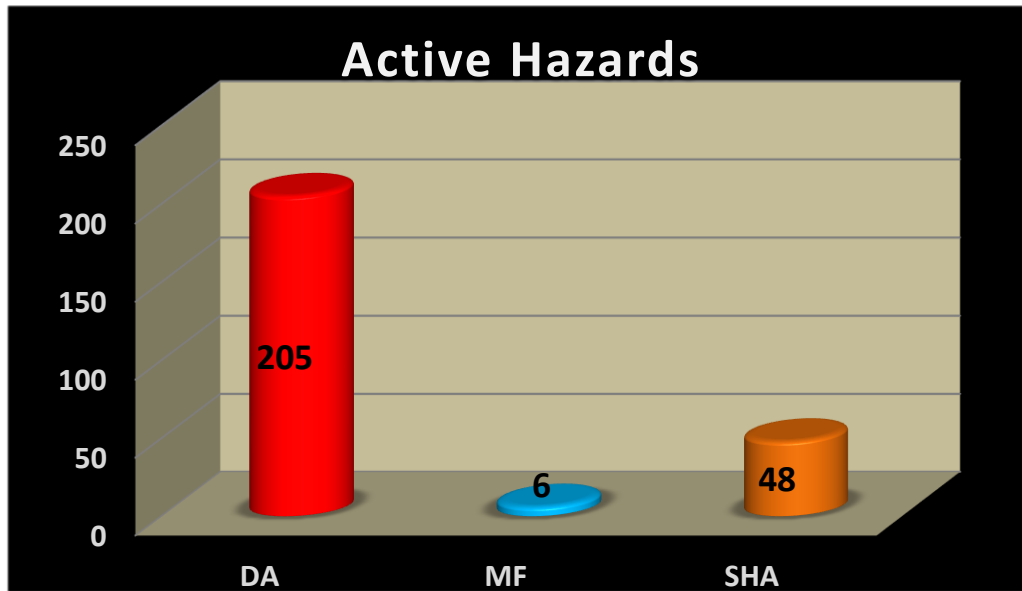
#### 1.2 Hazards Status by Month for January, 2015.

Month	Hazard Registered	Hazard Closed
January	46	41
<b>Grand Total</b>	<b>46</b>	<b>41</b>

#### 1.3 Hazards status by Time frame:

Reporting Period	Hazard Status		Hazard Total
	Open	Closed	
January	5	41	46
2015	5	41	46
Total to Date	259	3,860	4,119

## 1.4 Active hazard status by type of hazards registered in IMSMA:



## 1.5 Hazards Registered and closed by region for January, 2015.

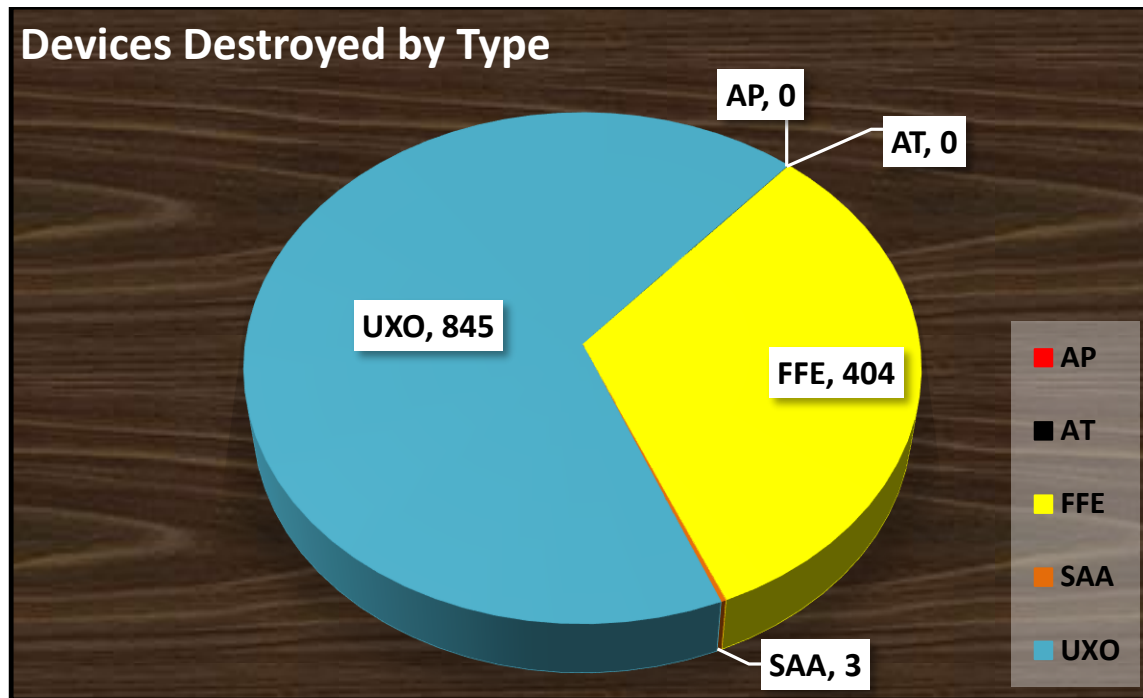
Regions	Hazards Registered	Hazards Closed
Bakool	3	
Bay	17	17
Galgaduud	16	15
Gedo	1	1
Hiraan	2	1
Lower Jubba	7	7
<b>Grand Total</b>	<b>46</b>	<b>41</b>

## 1.6 Hazards Registered and closed by Sector for January, 2015.

Sectors	Hazards Registered	Hazards Closed
Sector 2	6	6
Sector 3	21	18
Sector 4	2	1
Sector Kismayo	1	1
Outside sectors	16	15
<b>Grand Total</b>	<b>46</b>	<b>41</b>

## 2. DEVICES DESTROYED:

### 2.1 All devices destroyed by device type January, 2015.



### 2.2 Devices destroyed by time frame:

Reporting Period	Land Mines		ERW		
	AP	AT	FFE	SAA	UXO
January			404	3	845
2015			404	3	845
Total To date	78	40	12,245	11,358	51,719

### 2.3 Devices destroyed by month and devices categories January, 2015.

Month	Land Mines		ERW			Total
	AP	AT	FFE	SAA	UXO	
January			404	3	845	1,252
<b>Grand Total</b>	<b>0</b>	<b>0</b>	<b>404</b>	<b>3</b>	<b>845</b>	<b>1,252</b>

### 2.4 Devices destroyed distribution by implementing organizations January, 2015.

Organization	Land Mines		ERW			Total
	AP	AT	FFE	SAA	UXO	
AMISOM					594	594
Danish Demining Group				2	53	55
Norwegian peoples Aid			404	1	175	580
Somalia Police Force					23	23
<b>Grand Total</b>	<b>0</b>	<b>0</b>	<b>404</b>	<b>3</b>	<b>845</b>	<b>1,252</b>

### 2.5 Devices destroyed by regions January, 2015.

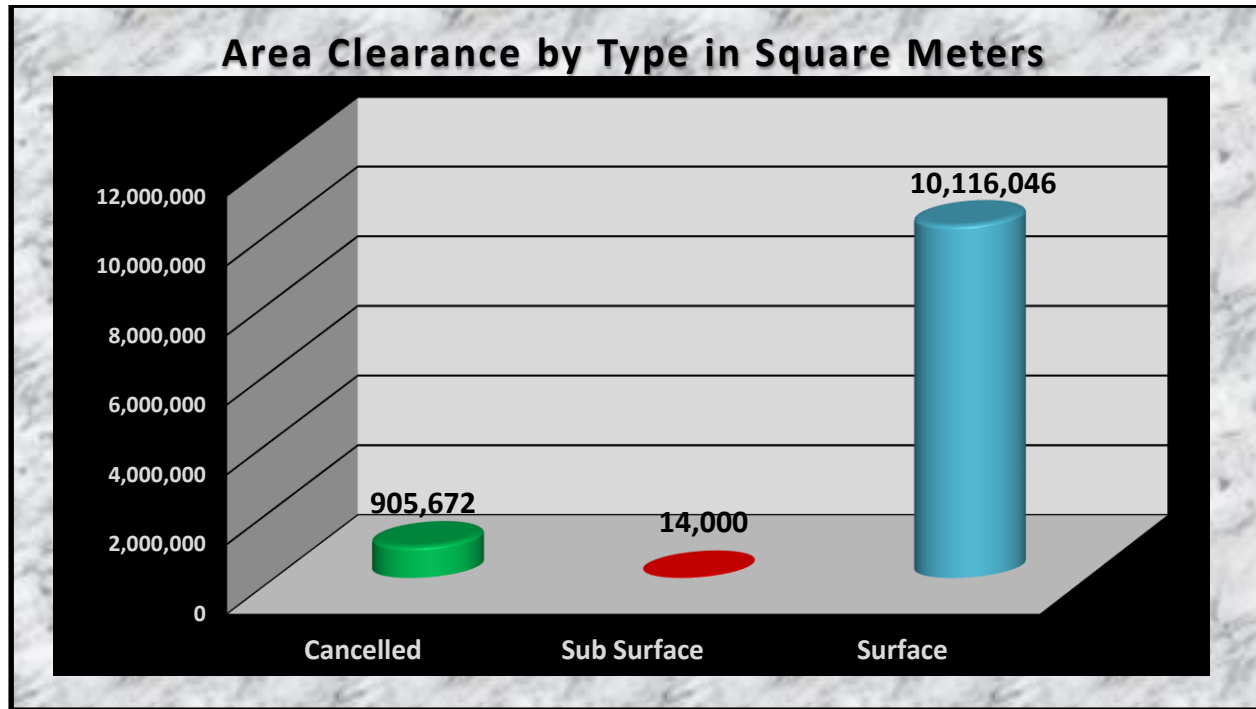
Region	Land Mines		ERW			Total
	AP	AT	FFE	SAA	UXO	
Banadir			404	1	175	580
Bay					22	22
Galgaduud				2	53	55
Gedo					1	1
Hiraan					1	1
Lower Jubba					593	593
<b>Grand Total</b>	<b>0</b>	<b>0</b>	<b>404</b>	<b>3</b>	<b>845</b>	<b>1,252</b>

**2.6 Devices Destroyed by Type and Sector January, 2015.**

Sectors	Land Mines		ERW			Total
	AP	AT	FFE	SAA	UXO	
Sector 1			404	1	175	580
Sector 2					589	589
Sector 3					23	23
Sector 4					1	1
Sector 5						
Sector Kismayo					4	4
Outside Sectors				2	53	55
<b>Grand Total</b>	<b>0</b>	<b>0</b>	<b>404</b>	<b>3</b>	<b>845</b>	<b>1252</b>

**3. AREA RELEASED:**

**3.1 Area clearance by type in square meters since the start of mine action activities:**



**3.2 Area clearance in square meters by Time Frame.**

Reporting Period	Cancelled	Sub Surface	Surface	Total
January	0	0	885,500	885,500
2015	0	0	885,500	885,500
Total to date	905,672	14,000	10,116,046	11,035,718



**3.3 Area clearance by Month and type in square meters January, 2015.**

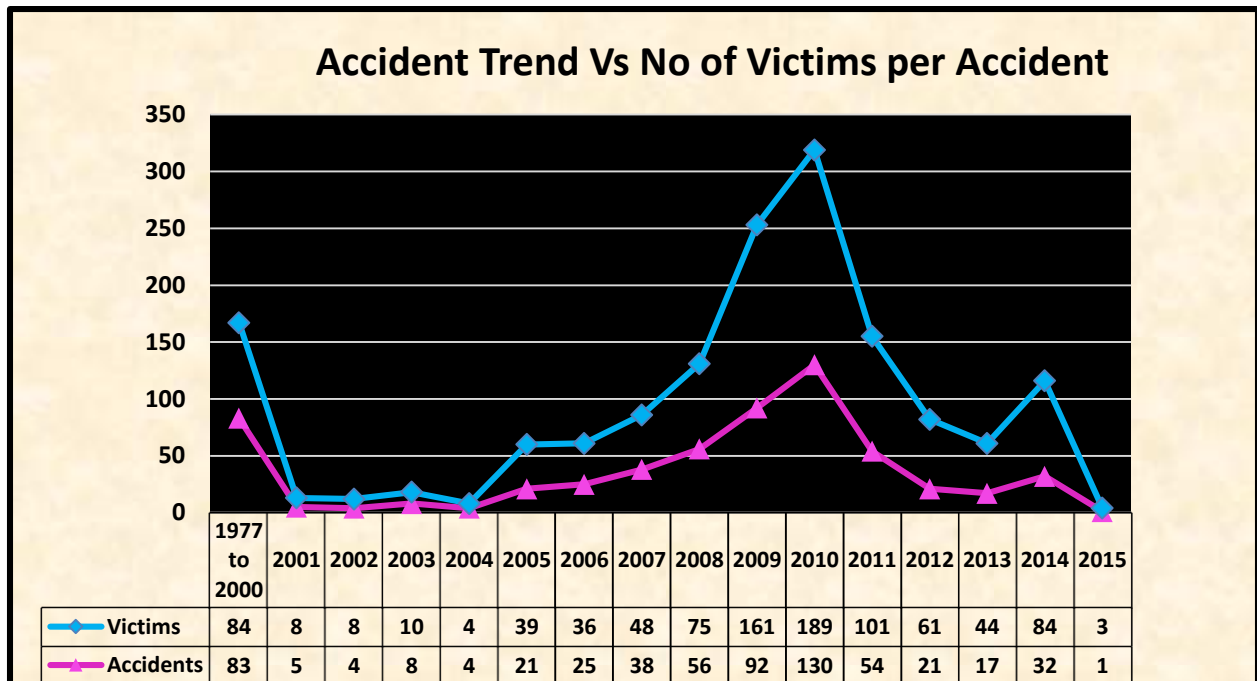
Month	surface	Sub - Surface	Cancelled	Total
January	885,500			885,500
<b>Grand Total</b>	<b>885,500</b>	<b>0</b>	<b>0</b>	<b>885,500</b>

**3.4 Area Clearance in square meters by Implementers for 2015.**

Organization	surface	Sub - Surface	Cancelled	Total
Norwegian peoples Aid	885,500			885,500
<b>Grand Total</b>	<b>885,500</b>	<b>0</b>	<b>0</b>	<b>885,500</b>

### 4. ACCIDENT & CASUALTIES:

#### 4.1 Accidents and casualty comparative graph by year since the start of mine action activities:



#### 4.2 Accidents and Victims Reported by Time Frame

Reporting Period	Accidents	Victims
January	1	3
2015	1	3
Total to date	591	955

#### 4.3 Casualties by gender January, 2015.

Gender	Death Total	Injured Total	Grand Total
Female	2	1	3
Male	0	0	0
<b>Grand Total</b>	<b>2</b>	<b>1</b>	<b>3</b>

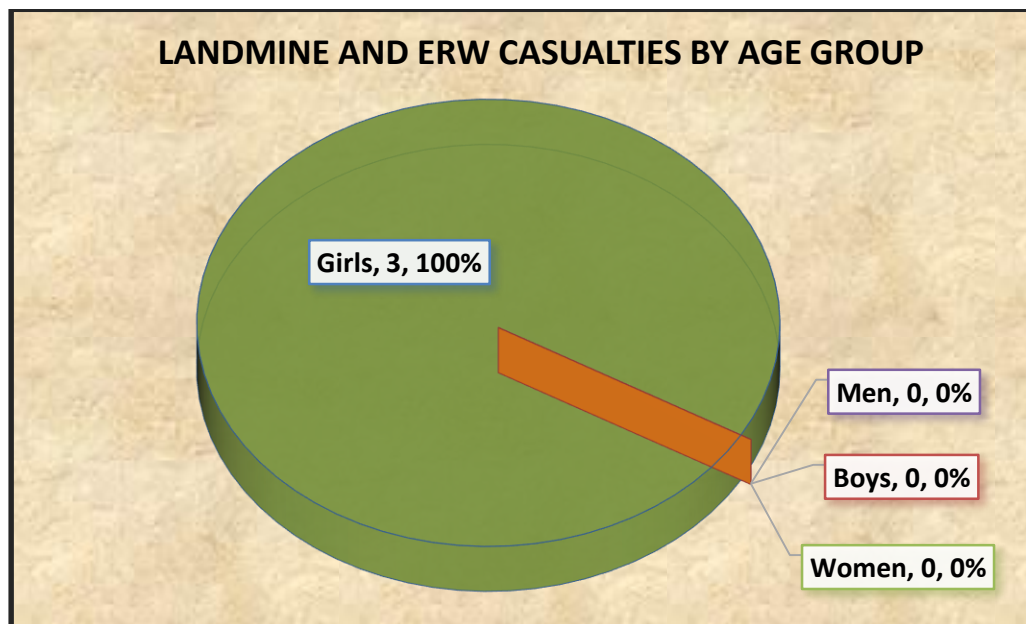
4.4 Death casualties by gender and age group January, 2015.

Gender	Killed				Death Total
	Children		Adults		
	Boys	Girls	Men	Women	
Female		2			2
Male					0
<b>Grand Total</b>	<b>0</b>	<b>2</b>	<b>0</b>	<b>0</b>	<b>2</b>

4.5 Injured casualties by gender and age group January, 2015.

Gender	Injured				Injured Total
	Children		Adults		
	Boys	Girls	Men	Women	
Female		1			1
Male					0
<b>Grand Total</b>	<b>0</b>	<b>1</b>	<b>0</b>	<b>0</b>	<b>1</b>

4.6 Chart Landmine & ERW casualties by age group January, 2015.



### 4.7 Casualties by year, age group and gender January, 2015.

Month	Children		Adults		Total
	Boy	Girl	Man	Woman	
January	0	3	0	0	3
<b>Grand Total</b>	<b>0</b>	<b>3</b>	<b>0</b>	<b>0</b>	<b>3</b>

### 4.8 Casualties by type of activities at the time of accident January, 2015.

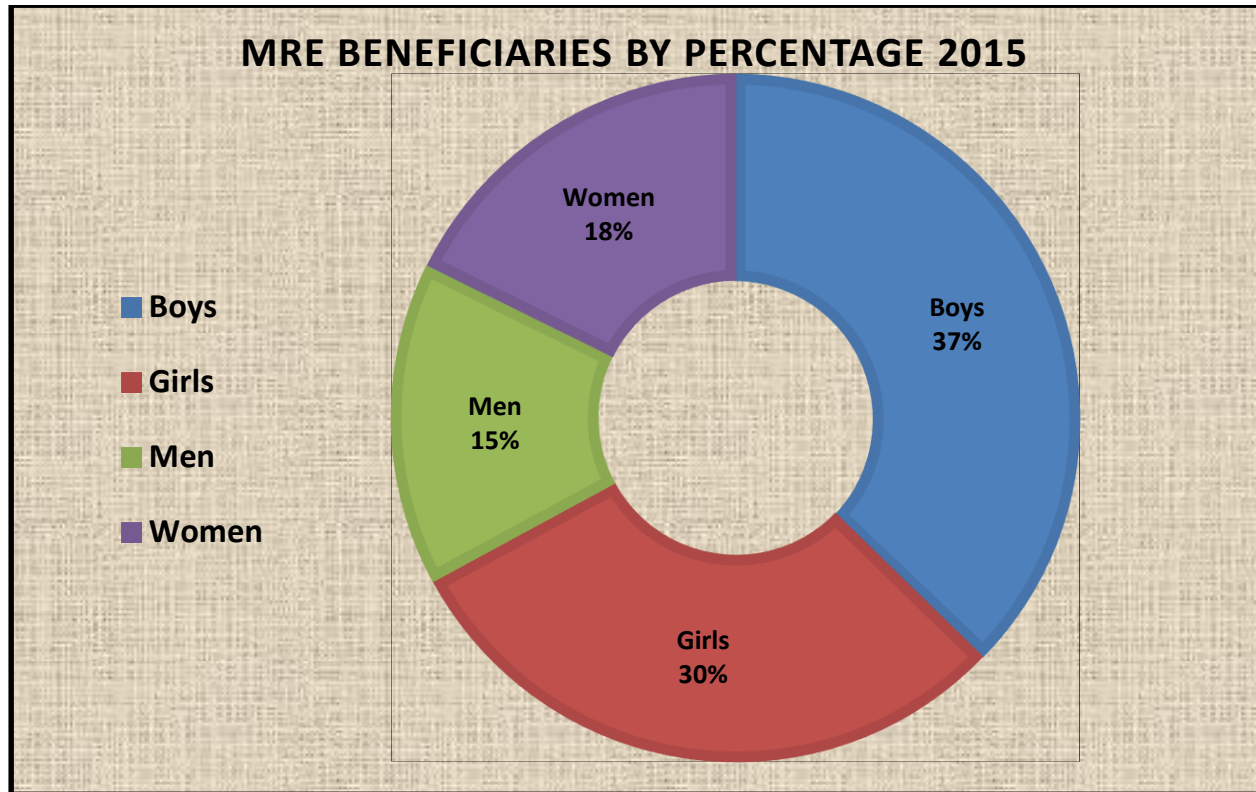
Month	Children		Adults		Total
	Boy	Girl	Man	Woman	
Tending Animals	0	3	0	0	3
<b>Grand Total</b>	<b>0</b>	<b>3</b>	<b>0</b>	<b>0</b>	<b>3</b>

### 4.9 Accidents and Victims reported by Sector January, 2015.

Sectors	Accidents	Victims
Sector 1		
Sector 2		
Sector 3		
Sector 4	1	3
Sector 5		
Sector Kismayo		
Outside Sectors		
<b>Grand Total</b>	<b>1</b>	<b>3</b>

**5. MINE RISK EDUCATION:**

**5.1 Chart MRE beneficiaries by Age Group January, 2015.**



**5.2 MRE Beneficiaries by Time Frame.**

Reporting Period	Boys	Girls	Men	Women	Total	No of Sessions
January	4,262	3,418	1,746	2,024	<b>11,450</b>	612
2,015	4,262	3,418	1,746	2,024	<b>11,450</b>	612
Total to Date	459,237	400,128	142,690	211,952	<b>1,214,007</b>	57,480

### 5.3 MRE Beneficiaries by region and age group January, 2015.

Regions	Boys	Girls	Men	Women	Total	No of Sessions
Bakool	215	190	412	415	1,232	58
Banadir	1,831	1,290	287	347	3,755	148
Galgaduud	953	869	143	432	2,397	126
Gedo	138	176	147	217	678	58
Hiraan	655	480	485	273	1,893	105
Lower Jubba	264	296	226	251	1,037	81
Lower Shabelle	176	117	35	34	362	29
Middle Shabelle	30	0	8	50	88	6
Mudug	0	0	3	5	8	1
<b>Grand Total</b>	<b>4,262</b>	<b>3,418</b>	<b>1,746</b>	<b>2,024</b>	<b>11,450</b>	<b>612</b>

### 5.4 MRE by implementing organization January, 2015.

Organization	Boys	Girls	Men	Women	Total	No of Sessions
SOHDO	1,721	1,213	267	324	3,525	136
Solutions for Humanity	135	32	88	39	294	10
SOYDEN	226	89	132	139	586	25
Ukroboronservice SC	2,180	2,084	1,231	1,513	7,008	433
UN Mine Action Service	0	0	28	9	37	8
<b>Grand Total</b>	<b>4,262</b>	<b>3,418</b>	<b>1,746</b>	<b>2,024</b>	<b>11,450</b>	<b>612</b>

### 5.5 MRE beneficiaries by gender and age group January, 2015.

Month	Children		Adults		Total	No of Sessions
	Boys	Girls	Men	Women		
January	4,262	3,418	1,746	2,024	11,450	612
<b>Grand Total</b>	<b>4,262</b>	<b>3,418</b>	<b>1,746</b>	<b>2,024</b>	<b>11,450</b>	<b>612</b>

### 5.6 MRE beneficiaries by gender, age group and target group January, 2015.

Target Group	Boys	Girls	Men	Women	Total	No of Sessions
IDP	272	276	345	568	1,461	98
Local Community	584	597	753	1,035	2,969	159
Military	0	0	159	45	204	10
NGO	0	0	23	9	32	6
Other	5	3	49	13	70	4
Refugee	74	84	66	74	298	16
Students	3,327	2,458	351	280	6,416	319
<b>Grand Total</b>	<b>4,262</b>	<b>3,418</b>	<b>1,746</b>	<b>2,024</b>	<b>11,450</b>	<b>612</b>

**NB: Other**

Imams, Journalists, AMISOM, Kenyan Police, TDI DEminers ... etc.

### 5.7 MRE beneficiaries by gender, age group and by type of places where activity sessions conducted January, 2015.

Type of Places	Boys	Girls	Men	Women	Total	No of Sessions
CommunityCentre	37	3	107	147	294	15
Health Facilities	75	143	212	405	835	43
MilitaryBase	0	0	159	45	204	10
Other	415	473	507	547	1,942	116
Refugee IDP Camp	272	276	345	568	1,461	98
ReligiousSite	1,741	1,187	170	119	3,217	161
School	1,672	1,283	209	161	3,325	162
TeamSite	50	53	37	32	172	7
<b>Grand Total</b>	<b>4,262</b>	<b>3,418</b>	<b>1,746</b>	<b>2,024</b>	<b>11,450</b>	<b>612</b>

**5.8 MRE by Sector with Total Beneficiaries January, 2015.**

<b>Sectors</b>	<b>Boys</b>	<b>Girls</b>	<b>Men</b>	<b>Women</b>	<b>Total</b>	<b>No of Sessions</b>
Sector 1	2,007	1,407	322	381	<b>4,117</b>	177
Sector 2	120	146	127	124	<b>517</b>	36
Sector 3	353	366	559	632	<b>1,910</b>	116
Sector 4	1,049	812	491	290	<b>2,642</b>	148
Sector 5	30	0	8	50	<b>88</b>	6
Sector Kismayo	144	150	99	127	<b>520</b>	45
Outside Sectors	559	537	140	420	<b>1,656</b>	84
<b>Grand Total</b>	<b>4,262</b>	<b>3,418</b>	<b>1,746</b>	<b>2,024</b>	<b>11,450</b>	<b>612</b>

**END**